

MR16 with Power LED's

Power-LED for Low Voltage Spot Light

Powerful MR16 based PowerLED's for an easy replacement of halogen lamps. The lamp is available in two different white colours depends on your application.

Benefits:

- High luminance
- Small size and easy replacement of halogen lamps
- Low power consumption
- Long lifetime
- Wide input voltage range

Application:

- Reading Light
- Light Source for Architecture
- Cabinet Lighting
- Home illumination
- Emergency Light

wide-angle
100°



narrow-angle
25°



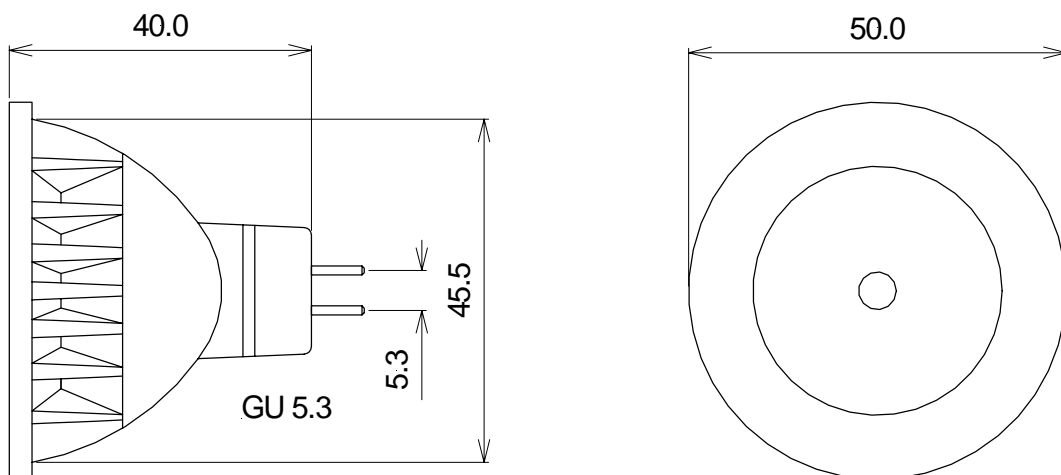
Specifications:

Part-Number	Colour	Colour Temperature	Intensity	Power	Angle
MR16-W11025	white	5000°-6000°K	25lm	1W	25°
MR16-W11100	white	5000°-6000°K	25lm	1W	100°
MR16-N11025	warmwhite	3000°-3500°K	25lm	1W	25°
MR16-N11100	warmwhite	3000°-3500°K	25lm	1W	100°

MR16-W31025	white	5000°-6000°K	80lm	3W	25°
MR16-W31100	white	5000°-6000°K	80lm	3W	100°
MR16-N31025	warmwhite	3000°-3500°K	80lm	3W	25°
MR16-N31100	warmwhite	3000°-3500°K	80lm	3W	100°

Forward Voltage: 6V – 24V AC/DC
 Operating Temperature: -40°C ~+85°C
 Housing: pure aluminium for heat-sink
 Dimensions: 51 x 51 mm
 Alimentation: Constant current

Technical Drawing



1. All specifications according to information from our manufacturers, without additional guarantee on our part
2. All dimensions are in millimetres
3. Tolerance is ± 0.2 mm unless otherwise specified
4. Specifications are subject to change without notice